

Technical Data Sheet

Special F400 Fire Rated Enclosed Switch-Disconnectors

General Description

Craig and Derricott have been supplying Fire Rated isolation equipment to the Ventilation Industry for more than 15 years.

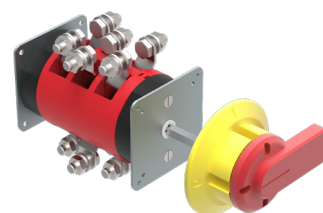
These special F400 Fire Rated isolators are supplied in IP65 Grade 316 Stainless Steel enclosures with fitted external fixing feet and specially drilled gland plates. All enclosure have a Pastel Orange (RAL 2003) powder coat paint finish.

Units are fitted with either a plastic or highly durable anodised aluminium metal handles and both come standard with padlocking in both 'Off' and 'On'. Large 'O' and 'I' labels are added to each unit.

The interior switches are constructed from a high temperature grade thermoset material, designed specifically for installations where the supply must be maintained for **2 hours at 400°C**.

This equipment is used to maintain power to vital equipment such as smoke extraction / ventilation fans allowing the safe evacuation of businesses, car parks and public areas in the event of a fire.

These switch-disconnectors are installed near to the extraction fan for isolation purposes, and have been tested in conjunction with the fan equipment to meet the stringent thermal requirements of BSEN 12101-3.



Catalogue Numbers

Rating	Format	Assembly Form	Catalogue No.	Encl. size	Handle Type
63A	3P+2E/B Aux	Base mounted in hinged door sheet steel enclosure	CDSP3486-2003	1	Plastic
125A	3P+2E/B Aux		CDSP3880-2003	2	Metal

Technical Specification

Within BS EN 12101-3: 2003 (Smoke and heat controls) there are different classes of duty which define a specific temperature gradient, upper temperature limit and time period. Craig and Derricott's **F400** products are built to withstand 400°C for 120 min.

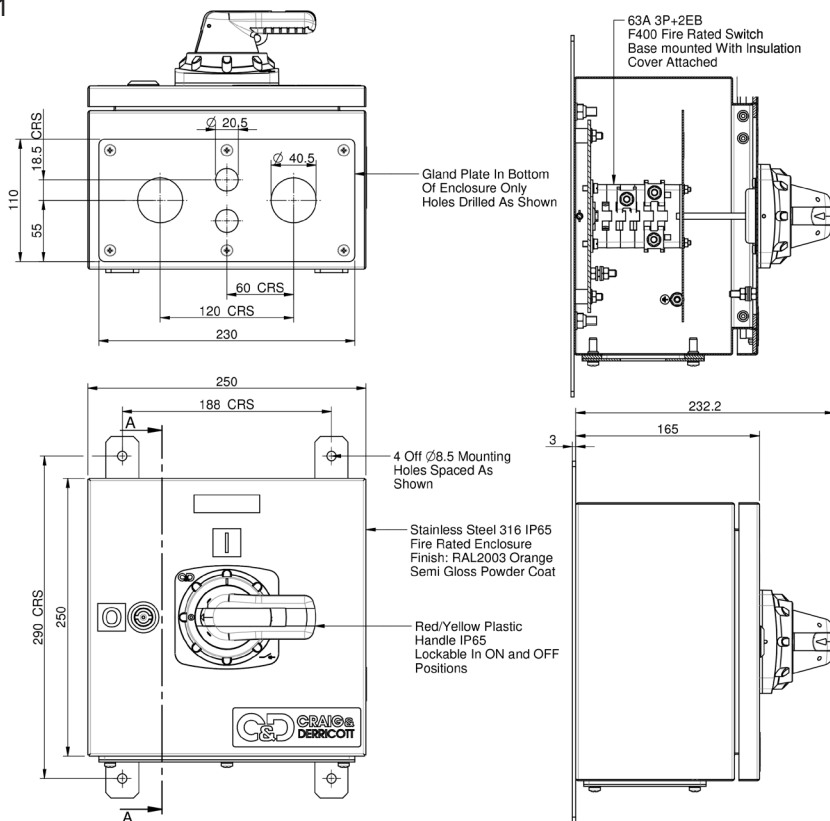
Application	Sym.	Unit	Category	63A	125A
Rated thermal current	I_{the}	A		63	125
Rated insulation voltage	U_i	V		690	690
Rated impulse voltage	U_{imp}	kV		6.0	6.0
Rated operational power (3 phase AC)	I_e / P_e	A/kW	415V - AC23A	40 / 18.5	100 / 55
			690V - AC23A	-	-
			690V - AC23B	20 / 9.5	-
			660V - AC23B	-	30 / 22
Short circuit withstand (1 sec)	I_{cw}	kA	RMS value	-	1.5
Conditional Short Circuit Current	Fuse gG	kA/Fuse(A)	415V	50 / 63	50 / 200
			690V	40 / 63	50 / 63
Recommended connecting capacity		-	Terminal type		
		mm ²	Flexible cable	16	50
		mm ²	Rigid cable	25	50
		Nm	Tightening torque	3.0	12.0

Technical Data Sheet

Special F400 Fire Rated Enclosed Switch-Disconnectors

Dimensions

Size 1



Example: specially drilled gland plate

Size 2

